

STYLE GUIDE



EISENHOWER
FELLOWSHIPS

The logo update (finalized in January 2010) sought to achieve the following objectives:

- improved proportions and legibility;
- greater emphasis on the name Eisenhower; and
- enhanced image quality.

The end product includes a bolder portrait with a stately tone and the use of a vibrant color.

The purpose of this style guide is to establish a set of standards for the use of the logo when used independently and when applied to a larger communications system.

The visual identity, which includes the logo, color palette, and fonts, should maintain its strength, professionalism, and boldness at all times. Together these elements should be used consistently across all collateral and communications to ensure legibility and to encourage immediate identification with Eisenhower Fellowships.



EISENHOWER FELLOWSHIPS

This mark represents the official signature for Eisenhower Fellowships. It consists of two elements that work together as a whole.

GRAPHIC

This photograph was selected by President Dwight D. Eisenhower to be used as the official photograph of the Chief Executive. This visual element is the primary feature of the logo, giving it a realistic and dignified tone.

WORDMARK

The wordmark is comprised of two justified lines of type. Greater emphasis is given to the word Eisenhower. The font used is Futura—the same as the logos original font. However, Eisenhower is set in Futura Condensed while Fellowships is set in Futura Book.



EISENHOWER
FELLOWSHIPS

PRIMARY CONFIGURATION

The vertically stacked logo at left should be used whenever possible and is the primary configuration for branding.



EISENHOWER
FELLOWSHIPS

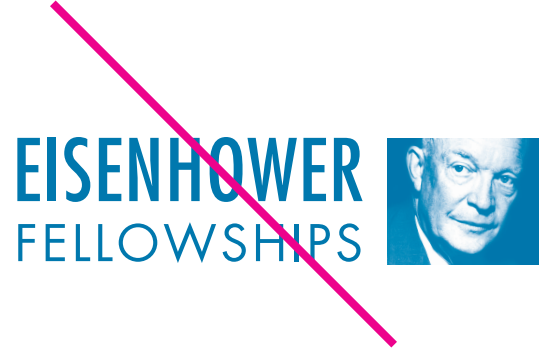
ALTERNATE CONFIGURATION

In the event that a vertical logo cannot be used legibly, the secondary configuration can be used as substitution. It cannot be used for official communications generated by the organization. It is limited to advertisements (print/web) and signage.

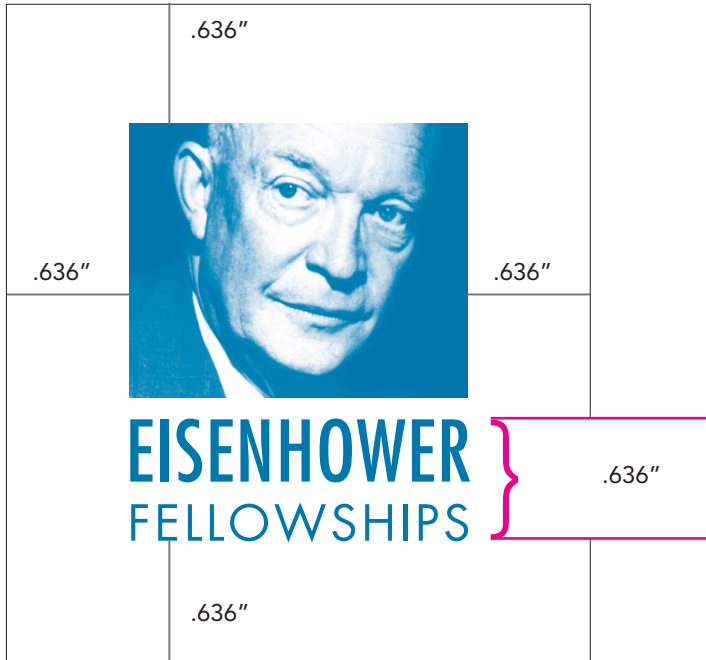
EISENHOWER
FELLOWSHIPS

LIMITED USE CONFIGURATION

This configuration—two lines of type with no graphic—can be used as a support graphic within the context of a multi-page communication. When displaying the stand-alone wordmark, the full logo must be featured prominently within the same communications piece. Examples include the double-sided business card and the letterhead set.



The logo cannot be redrawn, cropped, repositioned, or reconfigured in any way. Approved digital files of the primary, alternative, and limited use versions will be supplied to the organization for use according to the rules in this style guide.

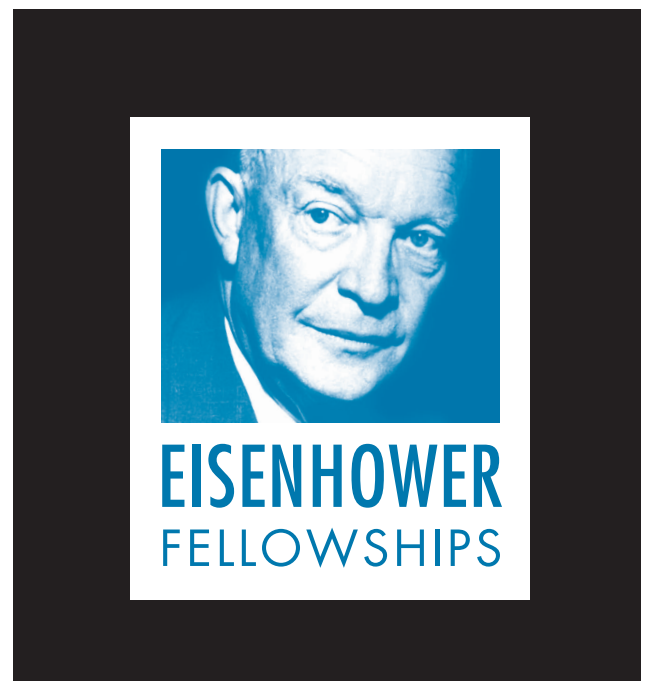
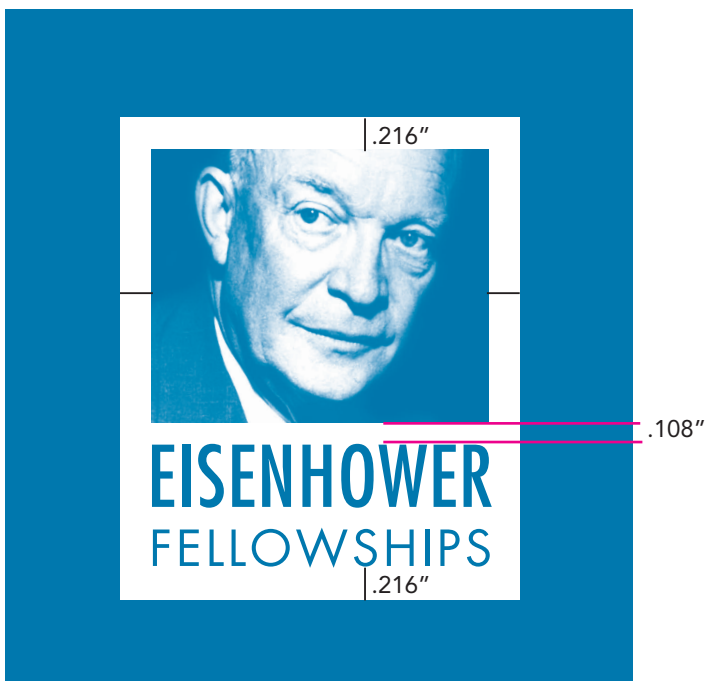


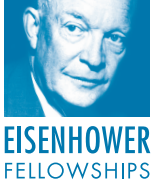
GUIDELINES

When the logo is placed in a text document or surrounded by images, clear space must be maintained around the perimeter of the logo. The minimum distance of that space is the height of the entire wordmark.

BORDER

When the logo is placed on a colored background it must maintain a white, clear space border on all four sides. The measurement of that space is twice the distance of the space between the photo and the wordmark.





.75" (W) X .932" (H)

GUIDELINES

This logo is extremely legible at small sizes. It can be viewed with little compromise at .75" wide and with great clarity at larger sizes. Maintaining at least .75" minimum width at all times is recommended. There is no maximum display size.

Note: When logo is sized, it must be scaled proportionately.



EISENHOWER
FELLOWSHIPS



EISENHOWER
FELLOWSHIPS



EISENHOWER FELLOWSHIPS

www.eisenhowerfellowships.org
 250 South 16th Street
 Philadelphia, PA 19102
 T 215.546.1738 F 215.546.4567

GUIDELINES

Boiler plate content that appears below the logo should be flush left, creating a strong vertical alignment. Clear space rules must be implemented to avoid content from competing with the wordmark.

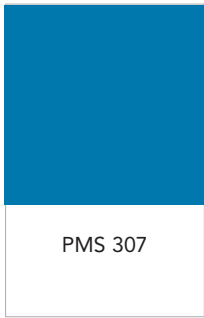
Placing content so it is flush with the top of the logo and left aligned (as opposed to centered) will help maintain a strong, geometric layout that is consistent with the hard-edged shape of the logo.



EISENHOWER FELLOWSHIPS

“Dwight Eisenhower hand an enduring vision of a world in which cooperation replaced confrontation and understanding replaced ignorance. I am proud to lead an organization in its sixth decade of working to make that vision a reality.”

—General Colin L. Powell, Chairman



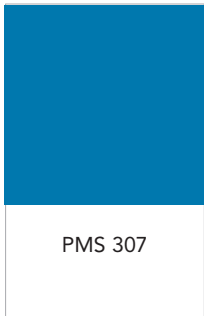
Full color process:
C=100 M=45 Y=16 K=1

RGB:
R=0 G=114 B=177

Web safe hex:
hex #0072b1

PRIMARY ORGANIZATION COLOR

The recognition of the brand will rely heavily on its dense, bold color. When possible, this distinctive blue (PMS 307) should be used for all print related communications. Additional color system breakdowns are listed at left and must be adhered to when not using the Pantone Matching System.



2-COLOR PALETTE

When budget allows, a PMS Cool Gray can be added to collateral to compliment PMS 307. It's a rich gray that will allow the blue to maintain the focus of the identity without being too overpowering.

EXTENDED PALETTE

This palette can be used in its entirety for print collateral or on the web.



C=9
M=15
Y=34
K=0

hex #e7d2ad



C=0
M=42
Y=100
K=1

hex #f5a01a



C=0
M=16
Y=77
K=0

hex #ffd457



Same as above



C=100
M=67
Y=0
K=23

hex #004b8d



C=0
M=2
Y=0
K=68

hex #717074



EISENHOWER
FELLOWSHIPS

1-COLOR PREFERRED



EISENHOWER
FELLOWSHIPS

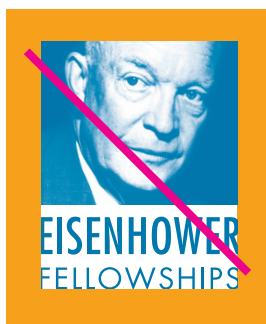
BLACK ACCEPTED



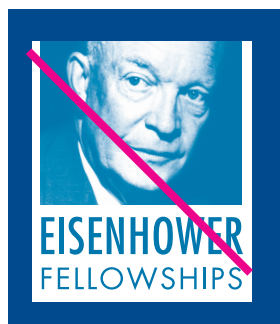
EISENHOWER
FELLOWSHIPS



EISENHOWER
FELLOWSHIPS



EISENHOWER
FELLOWSHIPS



EISENHOWER
FELLOWSHIPS

LOGO COLOR

If it is not possible to print using PMS 307, the logo may be reproduced in black. No other color should ever be applied to the logo.

BACKGROUND

The logo must always appear on a white background or, if placed on a color background it must maintain the white clear space border (see page 5).

Futura

Futura Book

abcdefghijklmnopqrstvwxyz
 ABCDEFGHIJKLMNOPQRSTUVWXYZ

Futura Oblique

abcdefghijklmnopqrstvwxyz
ABCDEFGHIJKLMNOPQRSTUVWXYZ

Futura Bold

abcdefghijklmnopqrstvwxyz
ABCDEFGHIJKLMNOPQRSTUVWXYZ

Times New Roman

Times New Roman

abcdefghijklmnopqrstvwxyz
 ABCDEFGHIJKLMNOPQRSTUVWXYZ

Times New Roman Italic

abcdefghijklmnopqrstvwxyz
ABCDEFGHIJKLMNOPQRSTUVWXYZ

Times New Roman Bold

abcdefghijklmnopqrstvwxyz
ABCDEFGHIJKLMNOPQRSTUVWXYZ

GRAPHIC DESIGN USE

The official stationery program of the organization is designed using Futura (Book and Bold). The copy, with the exception of the tagline, is set in upper and lower case characters.

Futura can take on a stronger role as display type in professionally designed collateral and on the website.

INTERNAL USE

It is recommended that all internal communications are set using the Times New Roman family. This serif font will help to create distinction between content and the logo. The use of this font in ALL communications relating to the organization will help to maintain uniformity and a professional presence.

GUIDELINES

The body of a letter should be set as follows:

.....
Top margin: 2.25"

This is critical in order to abide by the clear space rules.

.....
Left + Right margin: 1"

.....
Bottom margin: 1"

Letters should end above the tagline


.....
Text: Times New Roman

Letters should be set in 12 point type to ensure legibility. No paragraph indentations should be used.

Paragraphs should be set off by one hard return.

Text should be justified to create a straight edge on both the left and right sides.

If preferred, the author of the communication can indent his/her name as shown here.



EISENHOWER
FELLOWSHIPS

Chairman of the Board of Trustees: **General Colin L. Powell, USA (Retired)**

Chairmen Emeriti: **The Honorable Henry A. Kissinger | The Honorable George H.W. Bush**

Chair, Executive Committee: **Christine Todd Whitman**

President: **John S. Wolf**

2.25"

John Doe
2315 Spring Street
Hartford, Connecticut
00000

April 10, 2010

Dear John:

Lorem ipsum dolor sit amet, consectetur adipiscing elit. Curabitur vitae volutpat purus. Maecenas blandit nisi metus. Morbi diam nisi, sodales quis ornare lacinia, lacinia eget orci. Sed sagittis congue nisl, ut pulvinar eros faucibus a. Vestibulum vehicula orci et mauris dictum lobortis. Suspendisse in porta libero. Suspendisse lectus purus, convallis sed faucibus in, auctor in lectus. Sed at posuere turpis. Vivamus et nunc ut magna ultrices varius. Praesent rhoncus libero eget nibh scelerisque ut varius sapien aliquet. Donec tincidunt ullamcorper erat, fringilla mattis velit facilisis ac. Donec ullamcorper lacinia imperdiet. Aenean accumsan orci ac metus euismod sodales vitae ultrices purus. Nulla facilisi. Etiam non lorem a urna rhoncus cursus. Duis mattis ornare leo a ornare.

Quisque at nunc nec purus condimentum pellentesque. Lorem ipsum dolor sit amet, consectetur adipiscing elit. In at imperdiet mauris. Ut eu ligula diam. Vestibulum at tellus orci. Aenean ornare sodales felis sit amet gravida. Nam aliquam varius dolor, eu semper mauris mattis ac. Nulla dapibus mattis malesuada. Duis ligula dolor, adipiscing quis rhoncus eget, venenatis eu lorem. Etiam orci ante, faucibus eget ultrices vitae, euismod ut lectus. Quisque massa dui, sagittis vel fermentum vitae, imperdiet eget erat. Curabitur ac ultrices sapien. Suspendisse in neque ipsum, ac elementum risus. Etiam in nisl risus, quis sollicitudin nibh. Mauris in dui metus. Nulla hendrerit nisl eu risus consequat lacinia. Etiam mattis aliquam fringilla. Cras at lorem a felis vestibulum consectetur.

Nam ac eros sit amet nisi ultrices blandit. Proin mollis convallis magna, quis gravida purus facilisis at. Quisque nisi ligula, placerat semper laoreet eget, sodales ac erat.

Kind regards,

John S. Wolf

Leaders bettering the world around them.

250 South 16th Street, Philadelphia, PA 19102 • www.eisenhowerfellowships.org • T 215.546.1738 F 215.546.4567

GUIDELINES

Second sheet letterhead should be used for letters running longer than one page. Second sheets cannot be used for stand alone communications.

The body of a letter continuing on to a 2nd sheet should be set as follows:

.....
**Top margin for page number
 and continuation text: 1.25"**

.....
Top margin: 2.25"

.....
Left + Right margin: 1"

.....
Bottom margin: 1"

Letters should end above
 the tagline

**EISENHOWER
FELLOWSHIPS**

1.25"

Rspendisse in porta libero. Suspendisse lectus purus, convallis sed faucibus in, auctor in lectus. Sed at posuere turpis. Vivamus et nunc ut magna ultrices varius. Praesent rhoncus libero eget nibh scelerisque ut varius sapien aliquet. Donec tincidunt ullamcorper erat, fringilla mattis velit facilisis ac. Donec ullamcorper lacinia imperdiet. Aenean accumsan orci ac metus euismod sodales vitae ultrices purus. Nulla facilisi. Etiam non lorem a urna rhoncus cursus. Duis mattis ornare leo a ornare.

Quisque at nunc nec purus condimentum pellentesque. Lorem ipsum dolor sit amet, consectetur adipiscing elit. In at imperdiet mauris. Ut eu ligula diam. Vestibulum at tellus orci. Aenean ornare sodales felis sit amet gravida. Nam aliquam varius dolor, eu semper mauris mattis ac. Nulla dapibus mattis malesuada. Duis ligula dolor, adipiscing quis rhoncus eget, venenatis eu lorem. Etiam orci ante, faucibus eget ultrices vitae, euismod ut lectus. Quisque massa dui, sagittis vel fermentum vitae, imperdiet eget erat. Curabitur ac ultrices sapien. Suspendisse in neque ipsum, ac elementum risus. Etiam in nisl risus, quis sollicitudin nibh. Mauris in dui metus. Nulla hendrerit nisl eu risus consequat lacinia. Etiam mattis aliquam fringilla. Cras at lorem a felis vestibulum consectetur.

Nam ac eros sit amet nisi ultrices blandit. Proin mollis convallis magna, quis gravida purus facilisis at. Quisque nisi ligula, placerat semper laoreet eget, sodales ac erat.

Kind regards,

John S. Wolf

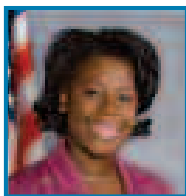
2010

EISENHOWER FELLOWS

EISENHOWER
FELLOWSHIPS

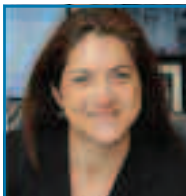
Adrienne Kravitz | Bridgewater, MA
Owner, AK Cranberries ■ Founder & Owner, Capital Realty Partners

As Owner of AK Cranberries, Adrienne Kravitz manages five farms with 800 land acres and 150 production acres. She is responsible for all aspects of the business including exploring new efficiency methods and control systems through technology and growing practices, sales, land acquisition, and operations management. During her fellowship travel, Ms. Kravitz will examine farm stability and sustainability, public private partnerships in existence to assist new and established farmers, and best practices in production.



Cherelle Parker | Philadelphia, PA
State Representative-200th Legislative District ■ Pennsylvania House of Representatives

As State Representative of the 200th Legislative District, Rep. Parker represents approximately 60,000 residents in the Northwest section of the city of Philadelphia. Rep. Parker serves on the House Appropriations Committee and the Labor Relations, Liquor Control and Professional Licensure committees. She has led the fight against illegal handguns, along with five other state legislators from across the country, to develop a new coalition aimed at ending their use. On her fellowship, she will examine sustainable community practices, economic development initiatives, and leadership development in politics.



Cynthia Figueroa | Philadelphia, PA
Deputy Commissioner ■ Department of Human Services, City of Philadelphia

As Deputy Commissioner, Ms. Figueroa is responsible for the oversight of the Division of Community Based Prevention Services (CBPS), including \$97 million in contracted services delivered by over 225 private nonprofit organizations. The mission of CBPS is to prevent the abuse, neglect, and delinquency of children and youth, and to prevent the formal involvement of families with the child welfare system. During her fellowship, she will explore methods used to enhance the representation and participation of women in elected positions at all levels of government. She will also examine best practices in political leadership development models.



Diane Mulcahy
Boston, MA
Adjunct Lecturer, Executive in Residence ■ Babson College, Entrepreneurship Division

For the past several years, Diane Mulcahy has split her time between the business and academic worlds. As global knowledge manager for corporate finance practice at McKinsey & Company, she led the practice's global knowledge efforts on capital markets. As an adjunct lecturer and executive in residence at Babson, Ms. Mulcahy teaches entrepreneurship classes in the MBA program and is a portfolio adviser to students who manage and trade a portion of the college's endowment. Diane was previously a venture capitalist for nearly ten years and has written two books on the venture capital financing of young companies. On her fellowship, Ms. Mulcahy will assess the environment for and relative prevalence of social and business entrepreneurship among women in the Middle East.

LEADERS BETTERING THE WORLD AROUND THEM

250 South 16th Street, Philadelphia, PA 19102 ■ www.eisenhowerfellowships.org ■ P 215.546.1738 F 215.546.4567



EISENHOWER
FELLOWSHIPS

TRUSTEE QUOTES

General Colin L. Powell, USA (ret.)

Chairman

“Dwight Eisenhower had an enduring vision of a world in which cooperation replaced confrontation and understanding replaced ignorance. I am proud to lead an organization in its sixth decade of working to make that vision a reality. When I meet Eisenhower Fellows and Trustees around the world, I am reminded of how much we can increase the chances for a more peaceful and prosperous world by building ties among like-minded global leaders.”

Governor Christine Todd Whitman

Chairwoman of the Executive Committee

“In meeting the demands of everyday life, we are often so busy that we don’t take the time to view the larger world. The Eisenhower Fellows, a worldwide network of leaders with tremendous potential, help open our eyes. Seeing the rest of the world’s talent pool should stimulate the growth of our own.”

President George H. W. Bush

Chairman Emeritus

“EF is the perfect organization for the era of globalization. It represents a growing network of leaders from around the world committed to international understanding. And, in a world that seems ever faster and smaller, EF has been fleet and agile enough to maintain its position at the forefront.”

Dr. Henry A. Kissinger

Chairman Emeritus

“The importance of the Eisenhower Fellowships mission is underscored by recent world events. Its vision is peace and progress, achieved through forging bonds among small and diverse groups of leaders from around the world who are rich in talent, ideals and achievements. The Eisenhower network fosters the trust, understanding and expanded vision today’s world so clearly needs.”

Victor Menezes

Senior Vice Chairman (ret.), Citigroup

Executive Committee Chairman Emeritus

“Eisenhower Fellowships is one of the great institutions that provides opportunities to exchange ideas and information that expand our knowledge of one another as individuals and as nations. These ‘up and comers’ have a unique view of their countries, the world at large and the future roles they may play in both.”

Leaders bettering the world around them.

250 South 16th Street, Philadelphia, PA 19102 ■ www.eisenhowerfellowships.org ■ P 215.546.1738 F 215.546.4567



EISENHOWER
FELLOWSHIPS

FACT SHEET

Origin

A private, non-profit, non-partisan organization created by a group of prominent American citizens to honor then-President Dwight D. Eisenhower for his contribution to humanity as a soldier, statesman, and world leader.

Mission

Eisenhower Fellowships engages emerging leaders from around the world to enhance their professional capabilities, broaden their contacts, deepen their perspectives, and unite them in a diverse, global community—a network where dialogue, understanding, and collaboration lead to a more prosperous, just, and peaceful world.

Program

An individualized national itinerary of visits and consultations with U.S. leaders aimed at specific professional insights and contacts and a broadened international perspective. The *Multi Nation Program* brings 25 Fellows from 25 countries to the USA each spring. The *Single Nation* or *Single Region Program* includes 25 Fellows from various professions from a single country or area. The *USA Program* sends Americans abroad to countries to gain international exposure to new people, institutions, technologies and ideas.

Eisenhower Fellows

Mid-career men and women of outstanding achievement who are expected to assume positions of national influence in fields judged by their countrymen to be of paramount importance to the country's future development and who value international networking. Eisenhower Fellows regularly attain higher positions after their fellowships. In a survey done in 2004, 51% of Eisenhower Fellowships alumni indicated that they had been involved in fostering societal change at some point after their fellowships

Eisenhower Network

Some 1,700 alumni Fellows from 106 countries, including heads of government, cabinet level officials, national legislators, provincial governors, university presidents, and CEOs of corporations and non-profit organizations who consult with other Fellows and with other members of the Eisenhower network.

Board of Trustees

A distinguished group of more than seventy-five senior international leaders in business and public affairs, chaired by General Colin L. Powell USA (retired) and managed by its president, the Honorable John S. Wolf.

Finance

Annual operating expenses of over \$4.5 million, the majority of which comes from globally active and aware individual sponsors, corporations, and foundations.

Leaders bettering the world around them.

250 South 16th Street, Philadelphia, PA 19102 ■ www.eisenhowerfellowships.org ■ P 215.546.1738 F 215.546.4567



EISENHOWER
FELLOWSHIPS

ORGANIZATION

Board of Trustees

Chairman

General Colin L. Powell, USA (Retired)

Chairmen Emeriti

The Honorable Henry A. Kissinger

The Honorable George H.W. Bush

Vice Chairman

James W. Hovey

President

The Fox Companies

Chair, Executive Committee

The Honorable Christine Todd Whitman

Former Governor

State of New Jersey

President

John S. Wolf

Leaders bettering the world around them.

250 South 16th Street, Philadelphia, PA 19102 ■ www.eisenhowerfellowships.org ■ P 215.546.1738 F 215.546.4567



EISENHOWER
FELLOWSHIPS

PROSPECTIVE FELLOWS

The USA program provides overseas exposure of 4-5 weeks designed to enhance Fellows' professional and personal growth, develop new contacts, and promote the exchange of ideas and international understanding. Fellows have meetings with leaders in their field, as well as cultural site visits and hospitality by local citizens.

USA Fellows are selected from four regional areas, Philadelphia, Research Triangle North Carolina, New England, and St. Louis. One Fellow per year is selected for an Agricultural Fellowship, the only fellowship currently available nationwide. USA candidates must be U.S. citizens aged 32-45. Spouses are encouraged to accompany Fellows, with limited professional appointments provided for them. Because of the intense appointment and travel schedule, children are not permitted on the program.

Applying for a USA Fellowship

In 2010, Eisenhower Fellowships USA program will conduct recruitments for our USA program. USA fellowship candidates should be U.S. citizens or permanent residents, aged 32-45, who possess advanced professional credentials, proven leadership capability, and the potential for broader impact in and beyond their professional fields. We will accept applicants in New England, Philadelphia, Research Triangle North Carolina, and St. Louis who will compete for individual fellowships. Finalists will be placed in a pool and fellowships will be granted based on excellence and how the finalists fit into our overall organization goals for 2011. The Fellowship covers all international and domestic travel, hotel accommodations, and meals.

Agriculture Fellowship Eisenhower Fellowships will also select one farmer or rancher in 2010, to travel abroad to meet with small and commercial farmers, farm organizations, businesses in the agriculture industry, government representatives, and university researchers as an USA Agriculture Fellow. The successful agriculture candidate will be a farmer or rancher, U.S. citizen or permanent resident, aged 32-45 with excellent professional credentials, demonstrated leadership experience, and a commitment to at least 15-20 years of further active leadership in the field of agriculture. The Fellowship covers all international and domestic travel, hotel accommodations, and meals.

Applications Deadline:

July 1, 2010. Interviews will be held mid-July through August.

For more information please email usa@eisenhowerfellowships.org

Leaders bettering the world around them.

250 South 16th Street, Philadelphia, PA 19102 ■ www.eisenhowerfellowships.org ■ P 215.546.1738 F 215.546.4567

2010 EISENHOWER FELLOWS




Adrienne Kravitz | Bridgewater, MA
Owner, AK Cranberries ■ Founder & Owner, Capital Realty Partners
As Owner of AK Cranberries, Adrienne Kravitz manages five farms with 800 land acres and 150 production acres. She is responsible for all aspects of the business including exploring new efficiency methods and control systems through technology and growing practices, sales, land acquisition, and operations management. During her fellowship travel, Ms. Kravitz will examine farm stability and sustainability, public-private partnerships in existence to assist new and established farmers, and best practices in production.

Chevelle Parker | Philadelphia, PA
State Representative-20th Legislative District ■ Pennsylvania House of Representatives
As State Representative of the 20th Legislative District, Rep. Parker represents approximately 60,000 residents in the Northwest section of the city of Philadelphia. Rep. Parker serves on the House Appropriations Committee and the Labor Relations, Labor Control and Professional Licensure committees. She has led the fight against illegal handguns, along with five other state legislators from across the country, to develop a new coalition aimed at ending their use. On her fellowship, she will examine sustainable community practices, economic development initiatives, and leadership development in politics.

Cynthia Figueroa | Philadelphia, PA
Deputy Commissioner ■ Department of Human Services, City of Philadelphia
As Deputy Commissioner, Ms. Figueroa is responsible for the oversight of the Division of Community Based Prevention Services (CBPS), including \$97 million in contracted services delivered by over 225 private nonprofit organizations. The mission of CBPS is to prevent the abuse, neglect, and delinquency of children and youth, and to prevent the formal involvement of families with the child welfare system. During her fellowship, she will explore methods used to enhance the representation and participation of women in elected positions at all levels of government. She will also examine best practices in politi-

EISENHOWER FELLOWSHIPS



Chairman of the Board of Trustees: **General Colin L. Powell, USA (Retired)**
Chairman Emeriti: **The Honorable Henry A. Kissinger | The Honorable George H.W. Bush**
Chair, Executive Committee: **Christine Todd Whitman**
President: **John S. Wolf**

John Doe
2315 Spring Street
Hartford, Connecticut
00000
April 10, 2010

Dear John:

Lorem ipsum dolor sit amet, consectetur adipiscing elit. Curabitur vitae volutpat purus. Maecenas blandit nisi metus. Morbi diam nisi, sodales quis ornare lacinia, lacinia eget orci. Sed sagittis congue nisl, at pulvinar eros faucibus a. Vestibulum vehicula orci et mauris dictum lobortis. Suspendisse in porta libero. Suspendisse lectus purus, convallis sed faucibus in, auctor in lectus. Sed at posuere turpis. Vivamus et nunc ut magna ultrices varius. Praesent rhoncus libero eget nibh scelerisque ut varius sapien aliquet. Donec tincidunt ullamcorper erat, fringilla mattis velit facilisis ac. Donec ullamcorper lacinia imperdiet. Aenean accumsan orci ac metus euismod sodales vitae ultrices purus. Nulla facilis. Etiam non lorem a urna rhoncus cursus. Duis mattis ornare leo a ornare.

Quisque at nunc nec purus condimentum pellentesque. Lorem ipsum dolor sit amet, consectetur adipiscing elit. In at imperdiet mauris. Ut eu ligula diam. Vestibulum at tellus orci. Aenean ornare sodales felis sit amet gravida. Nam aliquam varius dolor, eu semper mauris mattis ac. Nulla dapibus mattis malesuada. Duis ligula dolor, adipiscing quis rhoncus eget, venenatis eu lorem. Etiam orci ante, faucibus eget ultrices vitae, euismod ut lectus. Quisque massa dai, sagittis vel fermentum vitae, imperdiet eget erat. Curabitur ac ultrices sapien. Suspendisse in neque ipsum, ac elementum risu. Etiam in nisl risus, quis sollicitudin nibh. Mauris in dui metus. Nulla hendrerit nisl eu risus consoquet lacinia. Etiam mattis aliquam fringilla. Cras at lorem a felis vestibulum consectetur.

Nam ac eros sit amet nisl ultrices blandit. Proin mollis conwallis magna, quis gravida purus facilisis at. Quisque nisl ligula, placeret semper laoreet eget, sodales ac erat.

Kind regards,

John S. Wolf

Leaders bettering the world around them.
250 South 16th Street, Philadelphia, PA 19102 • www.eisenhowerfellowships.org • T 215.546.1738 F 215.546.4567

EISENHOWER FELLOWSHIPS

PROSPECTIVE FELLOWS

The USA program provides overseas exposure of 4-5 weeks designed to enhance Fellows' professional and personal growth, develop new contacts, and promote the exchange of ideas and international understanding. Fellows have meetings with leaders in their field, as well as cultural site visits and hospitality by local citizens.

College, Entrepreneurship Division
time between the business and academic worlds, like at McKinsey & Company, she led the program as an adjunct lecturer and executive in residence at the MBA program and in a portfolio adviser role's endorsement. Donec was previously a venture books on the venture capital financing of young in the environment for and relative prevalence of the Middle East.

EISENHOWER FELLOWSHIPS

ORGANIZATION

Board of Trustees
Chairman
General Colin L. Powell, USA (Retired)

T 215.546.4567

EISENHOWER FELLOWSHIPS

FACT SHEET

Origin
A private, non-profit, non-partisan organization created by a group of prominent American citizens to honor then-President Dwight D. Eisenhower for his contribution to humanity as a soldier, statesman, and world leader.

Mission
Eisenhower Fellowships engages emerging leaders from around the world to enhance their professional capabilities, broaden their contacts, deepen their perspectives, and unite them in a diverse, global community—a network where dialogue, understanding, and collaboration lead to a more prosperous, just, and peaceful world.

EISENHOWER FELLOWSHIPS

Leigh Cohen
Senior Program Officer
215.965.1965
lcohen@eisenhowerfellowships.org

250 South 16th Street
Philadelphia, PA 19102
T 215.546.1738
F 215.546.4567
www.eisenhowerfellowships.org



EISENHOWER FELLOWSHIPS

TRUSTEE QUOTES

General Colin L. Powell, USA (ret.)
Chairman
"Dwight Eisenhower had an enduring vision of a world in which cooperation replaced confrontation and understanding replaced ignorance. I am proud to lead an organization in its sixth decade of working to make that vision a reality. When I meet Eisenhower Fellows and Trustees around the world, I am reminded of how much we can increase the chances for a more peaceful and prosperous world by building ties among like-minded global leaders."

Governor Christine Todd Whitman
Chairwoman of the Executive Committee
"In meeting the demands of everyday life, we are often so busy that we don't take the time to view the larger world. The Eisenhower Fellows, a worldwide network of leaders with tremendous potential, help open our eyes. Seeing the rest of the world's talent pool should stimulate the growth of our own."

President George H. W. Bush
Chairman Emeritus
"EF is the perfect organization for the era of globalization. It represents a growing network of leaders from around the world committed to international understanding. And, in a world that seems ever faster and smaller, EF has been fleet and agile enough to maintain its position at the forefront."

Dr. Henry A. Kissinger
Chairman Emeritus
"The importance of the Eisenhower Fellowships mission is underscored by recent world events. Its vision to peace and progress, achieved through forging bonds among small and diverse groups of leaders from around the world who are rich in talent, ideals and achievements. The Eisenhower network fosters the trust, understanding and expanded vision today's world so clearly needs."

Victor Menezes
Senior Vice Chairman (ret.), Citigroup
Executive Committee Chairman Emeritus
"Eisenhower Fellowships is one of the great institutions that provides opportunities to exchange ideas and information that expand our knowledge of one another as individuals and as nations. These 'up and comers' have a unique view of their countries, the world at large and the future roles they may play in both."

Leaders bettering the world around them.
250 South 16th Street, Philadelphia, PA 19102 • www.eisenhowerfellowships.org • T 215.546.1738 F 215.546.4567

EISENHOWER FELLOWSHIPS

Dialogue, Understanding and Collaboration

It must be leadership that accepts responsibility of power, but one that exercises it in a spirit of trusteeship, through just and patient processes of mutual adjustment.

Dwight D. Eisenhower



STYLE GUIDE PRODUCED BY:

Masters Group **Design**

The Philadelphia Building
1315 Walnut Street, Suite 704
Philadelphia, PA 19107

215.545.9170 | 215.545.9171
www.mastersgroupdesign.net